

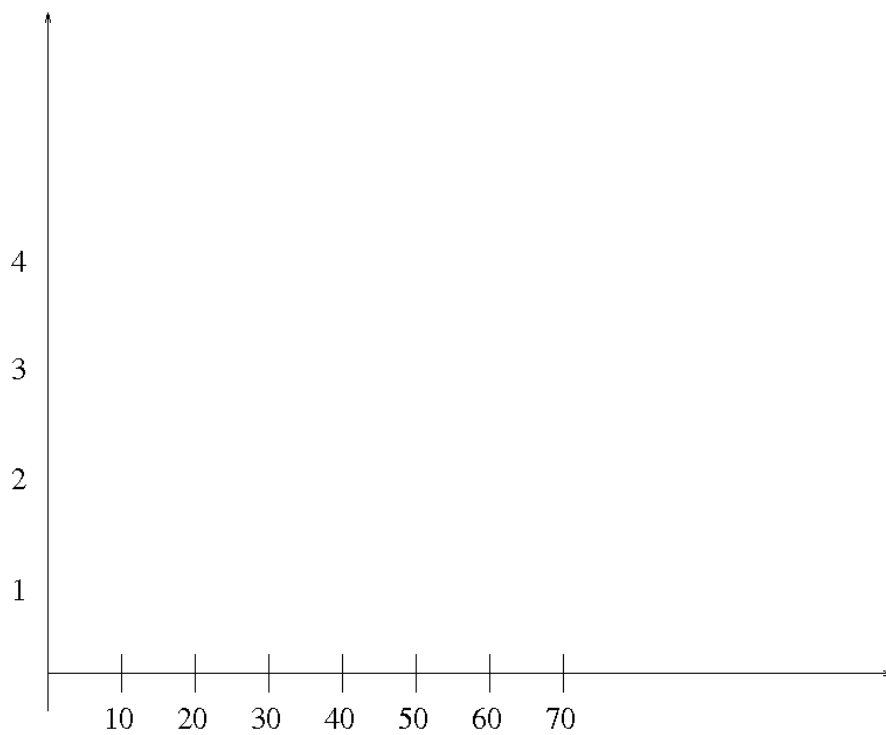
1. Consider the following data set:

63, 54, 51, 47, 43, 42, 36, 35, 31, 39, 22, 29, 27, 13, 15, 6

- (a) Find the mean, median and standard deviation of the data.
- (b) Fill in the following frequency table for the above data set:

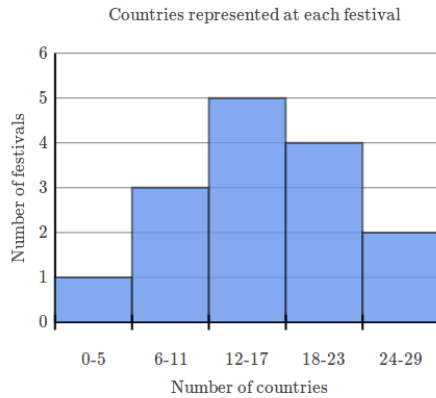
Classes	Frequency
0-10	
10-20	
20-30	
30-40	
40-50	
50-60	
60-70	

- (c) Draw the histogram of the above data on the graph below:



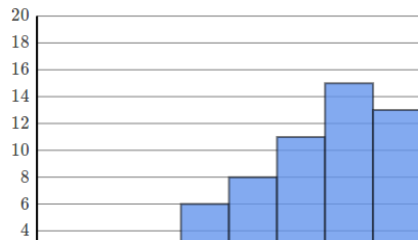
2. For each of the following graphs, please answer the question below.

- (a) Below is a histogram describing the number of festivals celebrated in various countries.

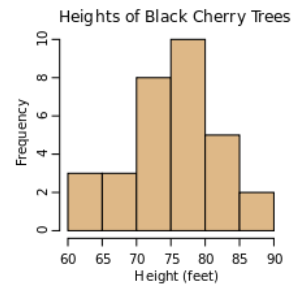


Find the number of festivals celebrated in the world.

- (b) Below is a histogram of a data set. Would you say the distribution is skewed left, skewed right or symmetric?

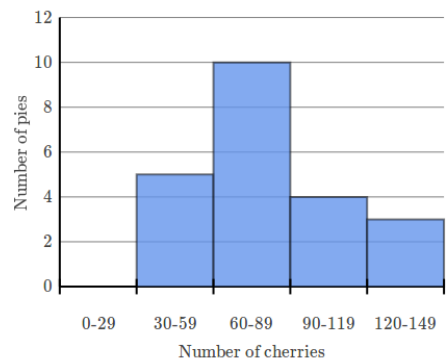


- (c) Below is a histogram describing the height of cherry trees.



Can you provide a possible value for the mean height of the cherry trees ?

- (d) Below is a histogram describing Number of cherries used in Pies.

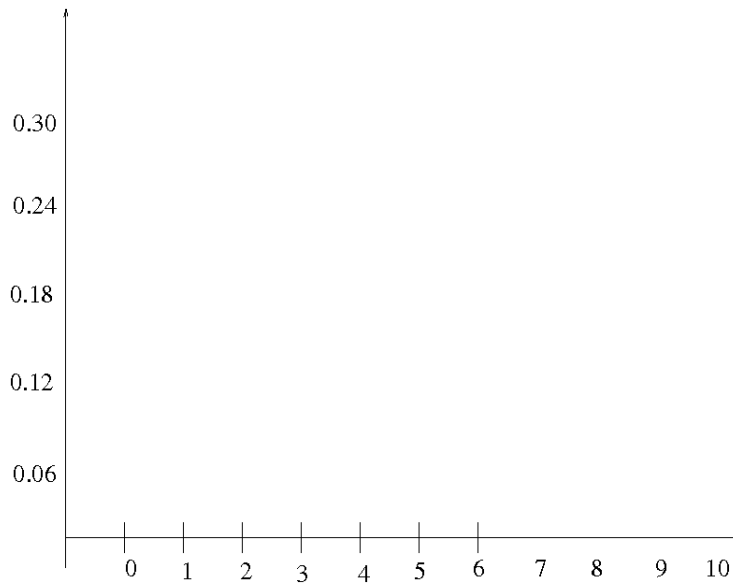


How many more pies were made with 60 – 89 cherries than those made with 90 – 119 ?

3. The following tables are given:

Classes	Frequency
1-3	4
3-5	8
5-7	5
7-9	12
9-11	6

1. Draw the histogram of the above data on the graph below:

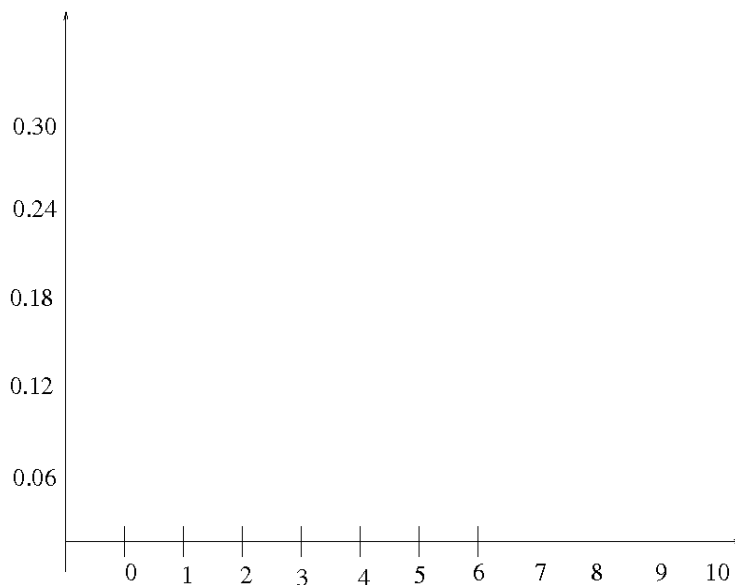


2. Can you provide an estimate of the mean and the variance of the data ?

4. The following tables are given:

Classes	Relative Frequency (Percentage/Probability)
0-0.5	0.001
0.5-1.5	0.0098
1.5-2.50	0.0439
2.5-3.5	0.1172
3.5-4.5	0.2051
4.5-5.5	0.2461
5.5-6.5	0.2051
6.5-7.5	0.1172
7.5-8.5	0.0439
8.5-9.5	0.0098
9.5-10.5	0.001

1. Draw the histogram of the above data on the graph below:



2. Can you provide an estimate of the mean and the variance of the data ?